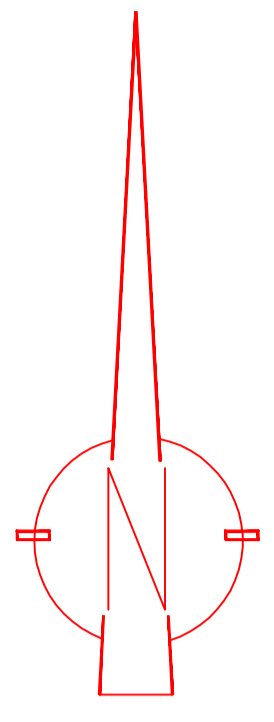


# Topographical Survey of Property of Center For Social Reserch Village Dera Mandi

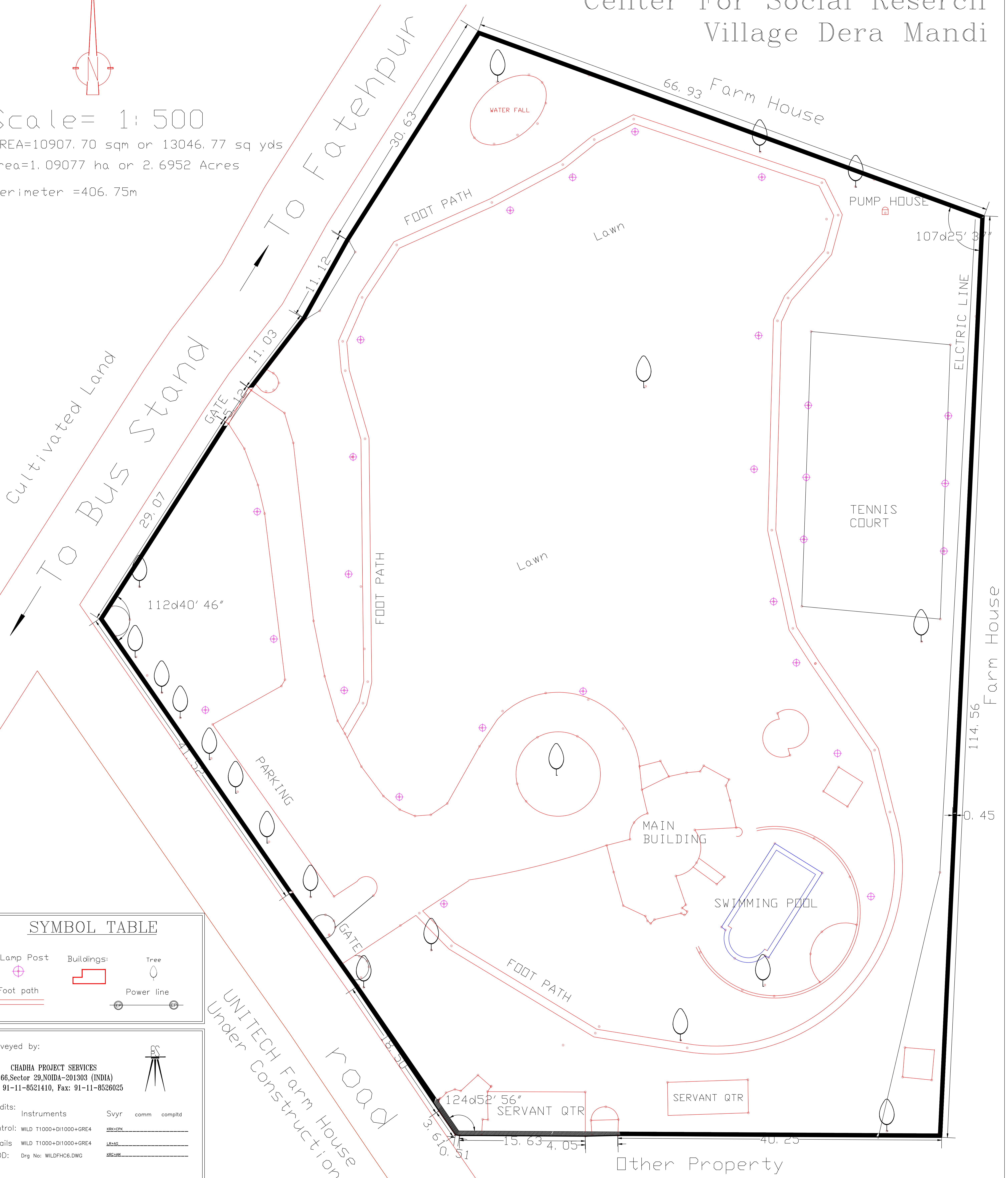


Scale = 1:500

AREA=10907.70 sqm or 13046.77 sq yds

Area=1.09077 ha or 2.6952 Acres

Perimeter =406.75m



## SYMBOL TABLE

Lamp Post	Buildings:	Tree
Foot path	Power line	

Surveyed by:

CHADHA PROJECT SERVICES  
166, Sector 29, NOIDA-201303 (INDIA)  
Tel: 91-11-8521410, Fax: 91-11-8526025

Credits:	Instruments	Svyr	comm	complt
Control:	WILD T1000+DI1000+GRE4	KPK+SPK		
Details:	WILD T1000+DI1000+GRE4	LEHAS		
CADD:	Drq No: WILDFHC6.DWG	KSG+AM		

Lt Col K R Chadha (retd),  
FIS, MIE, MINCA, MIRC,  
Consultant, Project Survey & Mapping